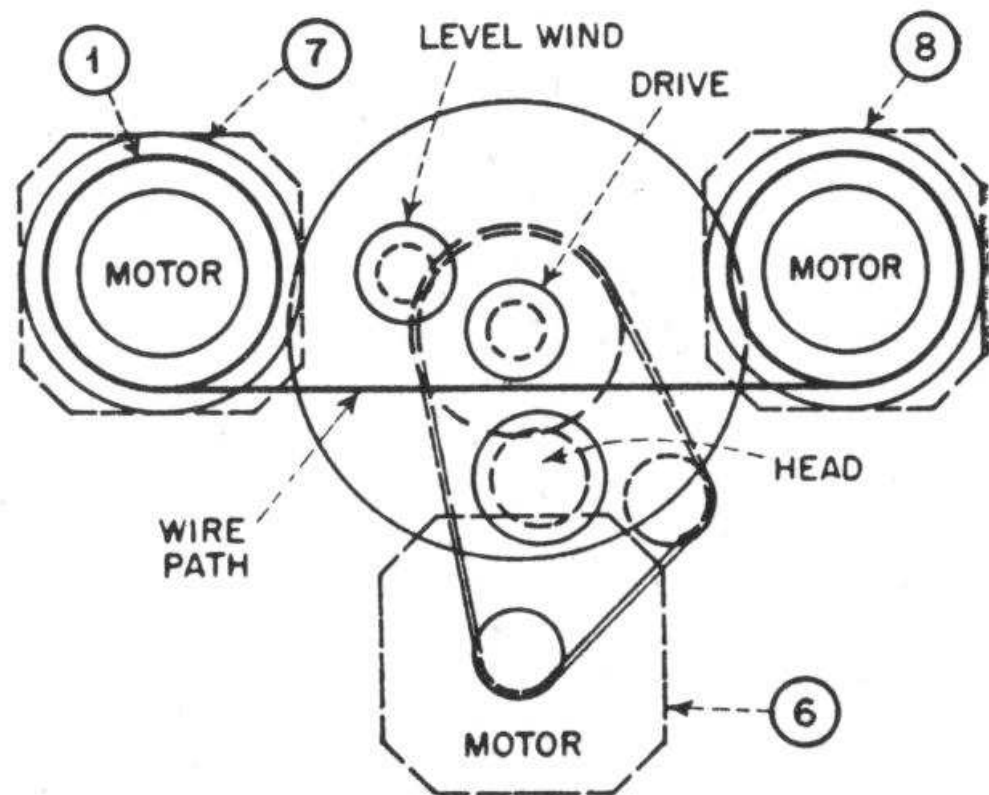


**PLAY BACK**



**REWIND**

FIG. 6-23. Schematic diagrams of drive mechanism of Nemeth Master wire recorder in playback and rewind positions. The head, drive pulley, and level-wind pulley are mounted on a turret, which can be rotated through 200 deg. In playback and recording, the wire moves from supply reel (1) over the stationary head (2), the drive pulley (3), and over up-and-down moving level-wind pulley (4) to the take-up reel (5). The drive pulley (3) located in the center of the turret is belt-driven by motor (6). It engages the wire without slippage by means of a wedgelike groove. In rewind and fast forward, the wire moves directly from one reel to the other. Each reel is driven or braked by a separate motor (7) and (8). (Courtesy of Otto R. Nemeth, Inc.)